

SOUTHWARK TENNIS CLUB NEWSLETTER

Southwark Tennis Club
Burgess Park Tennis Centre
Nr Addington Square
Junction of Albany Road /
Camberwell Road
London SE5 7JZ

- Play Tennis
- Join in
- Share
- Help out
- Learn
- Organise
- Find Out
- Practice
- Teach
- Have Fun

2005/06 EVENTS

JUNIOR EVENTS

- Talent ID Day
- Community Games
Primary School Finals
- 1/2 term tennis camp
- 5 week Summer Camp
- Junior Singles Tournament

JUNIOR COMPETITION

- Road to Wimbledon
- U12 National Juniors
Club League
- Mini-League
- Mini-Tennis Tourmnt

COMMUNITY GROUPS

- Muslim Womens Group
- Kick-Start Scheme
- Southwark Groundwork
- Aylesbury Young People
- Youth Offenders
- Kids Company

JUNIOR COACHING 50P!!!

Southwark Tennis Club have been successful in obtaining Local Network funding worth £5,180 to allow the club to offer junior tennis coaching group sessions at 50p a lesson from September 2005 to July 2006.

Coaching takes place on a Saturday morning:

- 10.15am - 11.00am 4-6yrs
- 10.15am - 11.15am 7-8yrs
- 11.15am - 12.15pm 9-11yrs
- 12.15pm - 1.15pm 12 & over

To apply for a place on any of the above courses please fully complete the application form available at the centre and return as soon as possible.

SUPERVISED PLAY

- Monday 4pm-6pm (7-10yrs)
 - Tuesday 4pm-6pm (11-16yrs)
- Rackets & balls available.
50p per session

CITY TENNIS CLUB ACCREDITATION

The Club has been working towards City Tennis Club status. The CTC initiative is run by the Lawn Tennis Association to promote tennis in inner city areas. Currently some 27 clubs have been approved. To achieve this status we have submitted a three year plan about how we see the Club developing with particular focus on increasing the numbers of juniors playing and their access to tennis coaching at an affordable rate. As well as bringing in

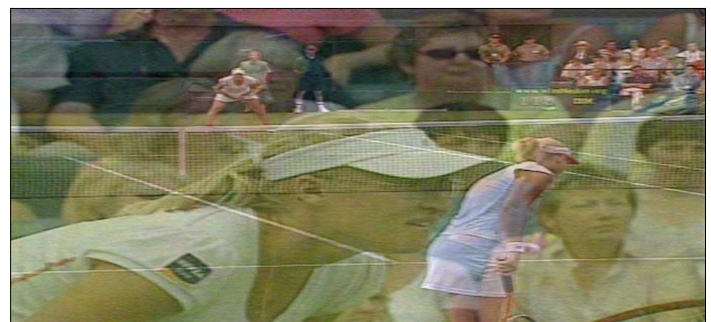


Children at the Summer Holiday Tennis Camp 2005
MATCHPLAY

We are looking to enter various local Junior Team Leagues this winter through to next season.

If you would like to be involved or to help out with transport please tick the appropriate box, on the junior coaching application form and leave at the Centre. Matchplay tennis (singles & doubles) Sunday's 1.30-3.30pm. Free to members. 50p non-members.

additional grant funding and equipment CTC status allows us to participate in a number of events including an annual junior club tournament.



COMPETITIVE MATCHES

Its been a busy and eventful year. A number of events have taken place:

- Matchplay morning
- 3 American Tournaments
- New Members weekend
- LTA Play Tennis event
- Single Tournament
- Disability Day
- Safer Southwark Partnership

In the competitive arena (adult) we have entered:

- Southwark Mixed League
- Club Ladder League
- Southwark League (Mens)
- Surrey League (Mens)

(Every effort has been made to set up Ladies competitive matches but have so far been unsuccessful. We would appreciate as much support as possible.)

The summer season is coming to an end. We had some very creditable results from our teams. Our best results were in the Surrey League where our team achieved 3 wins and 1 draw and are in pole position for promotion.

MEMBERSHIP RENEWAL

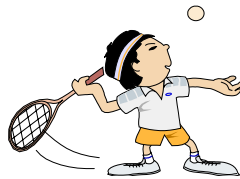
If you have not received a membership renewal form or unsure whether your membership is till valid or when it expires please contact :

Nicola.Donnelly@Southwark.gov.uk or leave a message at the Centre reception re membership secretary. Membership forms are available at the centre.

Southwark Tennis Club would like to apologise for delay in processing membership applications.

Email mailing list - the club now has an email list. So to keep up to date please email Southwark@hotmail.co.uk to be included

Who we are? - (rogues gallery) photos of our Captains and Coaches are on our website, see www.southwark.totaltennis.net and follow the links



COURT ETIQUETTE

Please be reminded of the following:

- Pay before play
- Consideration for users on adjacent courts
- No swearing, offensive behaviour to staff or other users
- Only tennis shoes or trainers with non-marking soles on court
- No chairs on court
- Do not leave rubbish on court



Junior champs!!

UPDATE SINCE APRIL

The 5 macadam all weather (black) courts are going to be resurfaced and painted shortly.

PRACTICE WALL

Funding is available finally to replace the existing (fence) wall. Alternative options are being considered

CAFETERIA

The cafeteria area has gone out to tender together with additional catering facilities in the park.

FORTHCOMING EVENTS

Please put the forthcoming events in your diary:

- Mens doubles tournament 24/9/05 2-6pm (£8 entry)
 - Ladies doubles tournament 25/9/05 2-6pm (£8 entry)
 - Mixed doubles tournament 1/10/05 2-6pm (£8 entry) go on be different enter!!
- End of season buffet 1/10/05

Forms available at the Centre

- Community Games Finals (secondary schools) date tba

50+ TENNIS SESSIONS - FREE

Every Friday 1pm-3pm Rackets balls & coach included

NEW ADULT COACHING-COURSES

start on Sunday the

- 18th Sept to 9th Oct
- 16th Oct to 6th Nov
- 13th Nov to 4th Dec

Forms available at the Centre.

Beginners: 10am-11.30am

Adv / Intermediate: 11.30am-1pm

Cost £20 beginners

Adv/Int £24 mem; £30 non-mem

"If you can imagine it, you can achieve it, if you can dream it, you can become it"

HELP!!!!

The committee are a group of volunteers helping to expand and improve the Centre. We would appreciate new members on the committee in a number of areas especially juniors, social secretary and team captains.

If you can help or have a skill / talent please contact us at email: southwarktenniscub@hotmail.co.uk

The Parks Department have confirmed that the Winter Hours will remain the same.

Mon-Fri 10am-9pm;
Tuesday 1pm-9pm;
Sat-Sun 10am-8pm.

The Club would like to thank all users , coaches, park rangers, sports development team, parents, children, teachers and voluntary workers in helping to make the first year at Burgess Park a resounding success.

John Connolly

Tennis Development Officer
BPTC



New Members always welcome

